

# \$0 - 6 1109 Summerside Drive, Edmonton

MLS® #E4411753

**\$0**

0 Bedroom, 0.00 Bathroom,  
Retail on 0.00 Acres

Summerside, Edmonton, AB

2,114 SF of fully fixtured medical space. Currently leased by a medical specialist, it was previously leased by a GP medical clinic. Offering 6 exams rooms with plumbing, and 4 rooms/offices without. Additional space includes waiting room, reception and nurse office, one large boardroom and staff lounge area, as well as two washrooms. Located in Summerside with exposure to Ellerslie Road. The complex features other uses such as dental clinic, pharmacy, medi-spa and daycare.

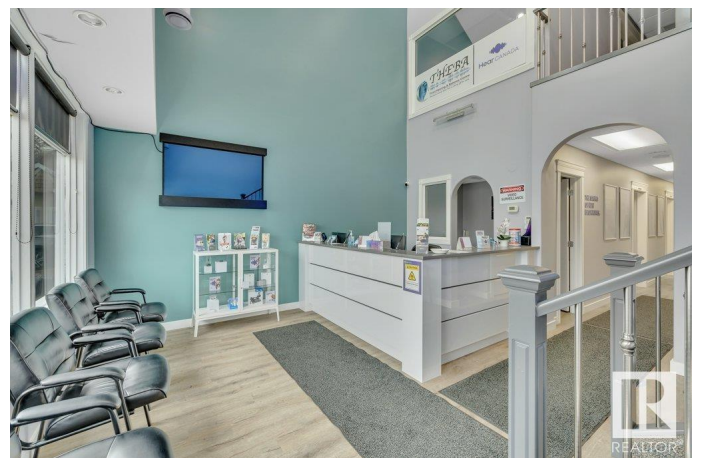
Built in 2007

## Essential Information

MLS® #	E4411753
Bathrooms	0.00
Acres	0.00
Year Built	2007
Type	Retail
Status	Active

## Community Information

Address	6 1109 Summerside Drive
Area	Edmonton
Subdivision	Summerside
City	Edmonton
County	ALBERTA



Province AB  
Postal Code T6X 0H5

### **Exterior**

Exterior Wood Frame  
Construction Wood Frame

### **Additional Information**

Date Listed October 25th, 2024  
Days on Market 139  
Zoning Zone 53

DATA IS DEEMED RELIABLE BUT IS NOT GUARANTEED ACCURATE BY THE REALTORS® ASSOCIATION OF EDMONTON. COPYRIGHT 2025 BY THE REALTORS® ASSOCIATION OF EDMONTON. ALL RIGHTS RESERVED. Trademarks are owned or controlled by the Canadian Real Estate Association (CREA) and identify real estate professionals who are members of CREA (REALTOR®, REALTORS®) and/or the quality of services they provide (MLS®, Multiple Listing Service®)

Listing information last updated on March 13th, 2025 at 1:02am MDT