

\$0 - 236 91 Street, Edmonton

MLS® #E4413489

\$0

0 Bedroom, 0.00 Bathroom,
Retail on 0.00 Acres

Ellerslie Industrial, Edmonton, AB

242 -1,217 sq. ft. and 270-1,577 sq. ft. of Prime main floor commercial space. High exposure to 33,100 vehicles per day along 91 Street (City of Edmonton) Ample on - site surface parking Other tenants include, gym, daycare, medical clinic, kick boxing, Cannabis, Tailors and more.

Built in 2013

Essential Information

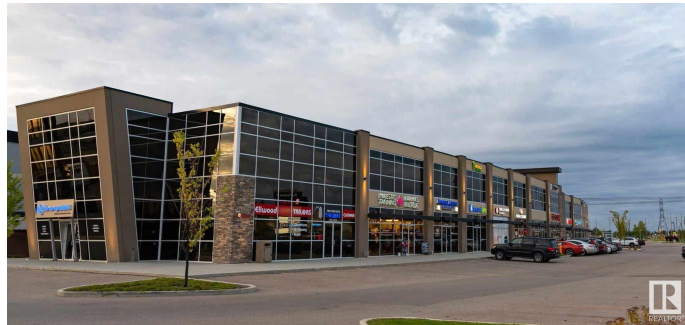
MLS® #	E4413489
Bathrooms	0.00
Acres	0.00
Year Built	2013
Type	Retail
Status	Active

Community Information

Address	236 91 Street
Area	Edmonton
Subdivision	Ellerslie Industrial
City	Edmonton
County	ALBERTA
Province	AB
Postal Code	T6X 0A9

Exterior

Exterior	Concrete
----------	----------



Construction Concrete

Additional Information

Date Listed November 12th, 2024

Days on Market 151

Zoning Zone 54

DATA IS DEEMED RELIABLE BUT IS NOT GUARANTEED ACCURATE BY THE REALTORS® ASSOCIATION OF EDMONTON. COPYRIGHT 2025 BY THE REALTORS® ASSOCIATION OF EDMONTON. ALL RIGHTS RESERVED. Trademarks are owned or controlled by the Canadian Real Estate Association (CREA) and identify real estate professionals who are members of CREA (REALTOR®, REALTORS®) and/or the quality of services they provide (MLS®, Multiple Listing Service®)

Listing information last updated on April 12th, 2025 at 4:17pm MDT