

Courtesy Of Jeff D Jackson Of Bode

\$639,900 - 21866 98a Avenue, Edmonton

MLS® #E4417848

\$639,900

4 Bedroom, 3.00 Bathroom, 2,161 sqft

Single Family on 0.00 Acres

Secord, Edmonton, AB

Discover the Luna model by Hopewell Residential—a stunning 4-bedroom, 3-bathroom two-story home with a double attached garage, perfect for modern family living. This thoughtfully designed home features open-concept living on a traditional lot with rear lane access and includes a main floor bedroom with a full bathroom for added convenience. Enjoy a secondary entrance, 9'™ foundation height, spindle railings on both levels, and luxury finishes like quartz countertops and knockdown ceiling texture throughout. The main level boasts luxury vinyl plank flooring, while the upper level offers a cozy bonus room, laundry, and carpeted bedrooms, including a primary bedroom with a walk-in closet, a spa-inspired 5-piece ensuite with a soaking tub, double sinks, and a tile-to-ceiling shower. Additional highlights include an exterior gas line for a future BBQ, an added window in the entertainment room, and stylish finishes that blend function and elegance. Photos are representative.



Built in 2025

Essential Information

MLS® #	E4417848
Price	\$639,900
Bedrooms	4

Bathrooms	3.00
Full Baths	3
Square Footage	2,161
Acres	0.00
Year Built	2025
Type	Single Family
Sub-Type	Detached Single Family
Style	2 Storey
Status	Active

Community Information

Address	21866 98a Avenue
Area	Edmonton
Subdivision	Secord
City	Edmonton
County	ALBERTA
Province	AB
Postal Code	T5T 7J3

Amenities

Amenities	Ceiling 9 ft., No Animal Home, No Smoking Home, See Remarks
Parking Spaces	4
Parking	Double Garage Attached

Interior

Interior Features	ensuite bathroom
Appliances	Dishwasher-Built-In, Microwave Hood Fan, Refrigerator, Stove-Electric
Heating	Forced Air-1, Natural Gas
Stories	2
Has Basement	Yes
Basement	Full, Unfinished

Exterior

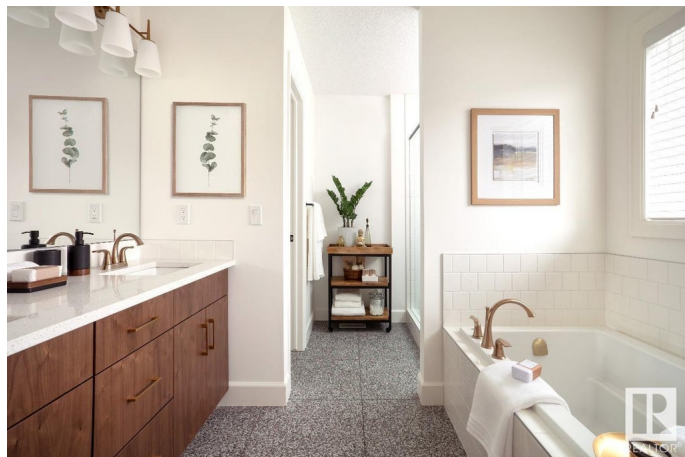
Exterior	Wood, Stone, Vinyl
Exterior Features	Back Lane, Park/Reserve, Playground Nearby, Schools, Shopping Nearby
Roof	Asphalt Shingles
Construction	Wood, Stone, Vinyl
Foundation	Concrete Perimeter

Additional Information

Date Listed January 13th, 2025

Days on Market 60

Zoning Zone 58



DATA IS DEEMED RELIABLE BUT IS NOT GUARANTEED ACCURATE BY THE REALTORS® ASSOCIATION OF EDMONTON. COPYRIGHT 2025 BY THE REALTORS® ASSOCIATION OF EDMONTON. ALL RIGHTS RESERVED. Trademarks are owned or controlled by the Canadian Real Estate Association (CREA) and identify real estate professionals who are members of CREA (REALTOR®, REALTORS®) and/or the quality of services they provide (MLS®, Multiple Listing Service®)

Listing information last updated on March 14th, 2025 at 5:17am MDT