

Courtesy Of Mathew T Haupt and Dane Phaneuf Of Exp Realty

## \$410,000 - 19035 46 Avenue, Edmonton

MLS® #E4424072

### \$410,000

5 Bedroom, 2.00 Bathroom, 1,020 sqft  
Single Family on 0.00 Acres

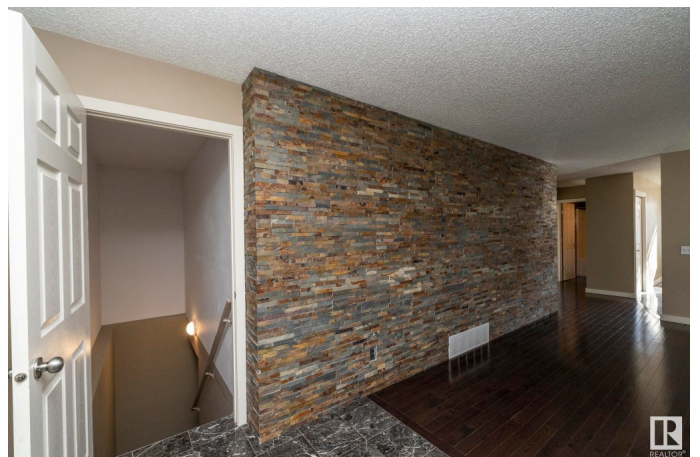
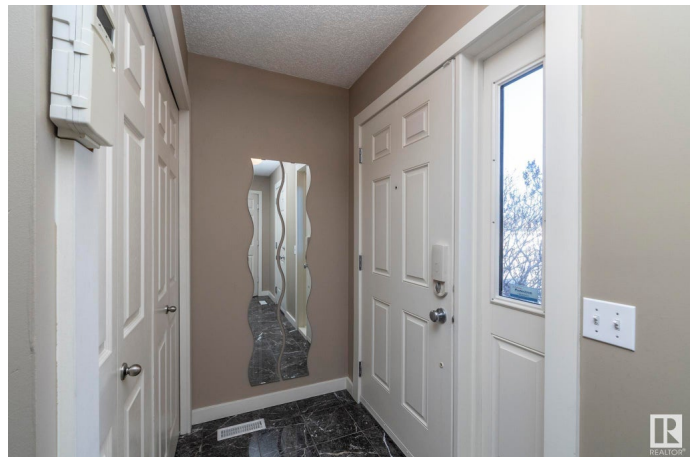
Jamieson Place, Edmonton, AB

LOCATION, LOCATION, LOCATION!!! Don't miss this exceptional buy in the desired community of Jamieson Place! This great buy is quietly nested in Cul-de-sac on a lot that is a great size and has plenty of PRIVACY backing onto trees with sunny south exposure. This great stylish home has a FULLY FINISHED basement w/total of 5 bedrooms, 3 up, 2 down and 2 full baths. Home is LOADED with upgrades and sits at 1,020 sqft above grade with over 2000 sqft of living space including the FF basement. Large sundeck, fully fenced and low maintenance landscape to provide you with a comfortable lifestyle. Close to walkway, shopping centre, transportation and great access routes to Henday and Whitemud. End your search for a home today!!!

Built in 2005

### Essential Information

MLS® #	E4424072
Price	\$410,000
Bedrooms	5
Bathrooms	2.00
Full Baths	2
Square Footage	1,020
Acres	0.00
Year Built	2005



Type	Single Family
Sub-Type	Detached Single Family
Style	Bungalow
Status	Active

### **Community Information**

Address	19035 46 Avenue
Area	Edmonton
Subdivision	Jamieson Place
City	Edmonton
County	ALBERTA
Province	AB
Postal Code	T6M 2Y2

### **Amenities**

Amenities	See Remarks
Parking	Double Garage Attached

### **Interior**

Appliances	Dishwasher-Built-In, Dryer, Microwave Hood Fan, Refrigerator, Stove-Electric, Washer
Heating	Forced Air-1, Natural Gas
Stories	2
Has Basement	Yes
Basement	Full, Finished

### **Exterior**

Exterior	Wood, Vinyl
Exterior Features	See Remarks
Roof	Asphalt Shingles
Construction	Wood, Vinyl
Foundation	Concrete Perimeter

### **School Information**

Elementary	MICHAEL A. KOSTEK SCHOOL
Middle	S. BRUCE SMITH SCHOOL
High	JASPER PLACE HIGH SCHOOL

### **Additional Information**

Date Listed	March 5th, 2025
-------------	-----------------

Days on Market 9

Zoning Zone 20

DATA IS DEEMED RELIABLE BUT IS NOT GUARANTEED ACCURATE BY THE REALTORS® ASSOCIATION OF EDMONTON. COPYRIGHT 2025 BY THE REALTORS® ASSOCIATION OF EDMONTON. ALL RIGHTS RESERVED. Trademarks are owned or controlled by the Canadian Real Estate Association (CREA) and identify real estate professionals who are members of CREA (REALTOR®, REALTORS®) and/or the quality of services they provide (MLS®, Multiple Listing Service®)

Listing information last updated on March 14th, 2025 at 9:47am MDT