

# \$189,900 - 318 2508 50 Street, Edmonton

MLS® #E4424248

**\$189,900**

2 Bedroom, 1.00 Bathroom, 864 sqft

Condo / Townhouse on 0.00 Acres

Mill Woods Town Centre, Edmonton, AB

This 2-bedroom, 1-bathroom condo offers the perfect combination of comfort, convenience, and community. Located in the vibrant Mill Woods neighborhood, this well-maintained condo features spacious bedrooms, a bright living area, and a modern kitchen, all with plenty of natural light and contemporary finishes. Enjoy the convenience of being close to essential amenities, including an ETS bus stop and bus terminal for easy commuting, as well as nearby restaurants, cafes, shopping, and parks. The Grey Nuns Hospital and public library are just minutes away, making this an ideal location for both healthcare needs and leisure activities. With excellent access to public transportation, schools, grocery stores, and more, this condo is perfect for anyone looking to live in a dynamic and thriving community. Don't miss the opportunity to make this charming condo your home in Mill Woods!

Built in 1993

## Essential Information

MLS® #	E4424248
Price	\$189,900
Bedrooms	2
Bathrooms	1.00
Full Baths	1



Square Footage	864
Acres	0.00
Year Built	1993
Type	Condo / Townhouse
Sub-Type	Lowrise Apartment
Style	4 Level Split
Status	Active

### **Community Information**

Address	318 2508 50 Street
Area	Edmonton
Subdivision	Mill Woods Town Centre
City	Edmonton
County	ALBERTA
Province	AB
Postal Code	T6L 6X9

### **Amenities**

Amenities	Parking-Extra, Parking-Visitor, Sprinkler System-Fire, Television Connection
Parking Spaces	1
Parking	Stall

### **Interior**

Appliances	Dishwasher-Built-In, Dryer, Hood Fan, Refrigerator, Stove-Electric, Washer
Heating	Forced Air-1, Natural Gas
Fireplace	Yes
Fireplaces	See Remarks
# of Stories	4
Stories	4
Has Basement	Yes
Basement	None, No Basement

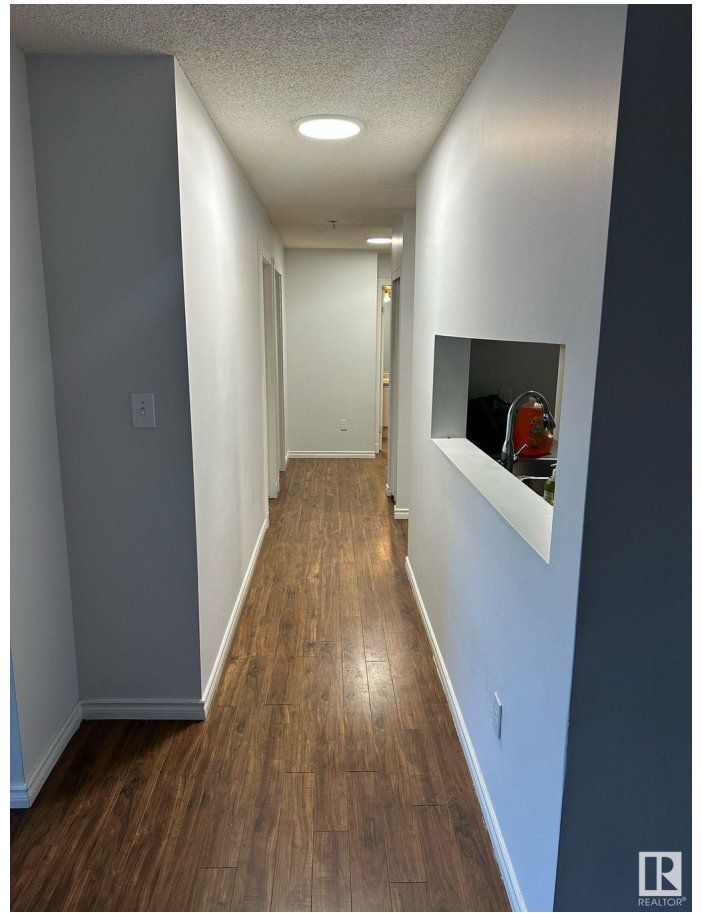
### **Exterior**

Exterior	Wood, Stucco
Exterior Features	Airport Nearby, Fenced, Landscaped, No Through Road, Park/Reserve, Playground Nearby, Public Transportation, Schools
Roof	Asphalt Shingles

Construction Wood, Stucco  
Foundation Concrete Perimeter

**Additional Information**

Date Listed March 6th, 2025  
Days on Market 6  
Zoning Zone 29  
Condo Fee \$367



DATA IS DEEMED RELIABLE BUT IS NOT GUARANTEED ACCURATE BY THE REALTORS® ASSOCIATION OF EDMONTON. COPYRIGHT 2025 BY THE REALTORS® ASSOCIATION OF EDMONTON. ALL RIGHTS RESERVED. Trademarks are owned or controlled by the Canadian Real Estate Association (CREA) and identify real estate professionals who are members of CREA (REALTOR®, REALTORS®) and/or the quality of services they provide (MLS®, Multiple Listing Service®)

Listing information last updated on March 12th, 2025 at 2:17pm MDT

