

Courtesy Of . Ravinder Singh Gill Of Exp Realty

## \$849,000 - 3355 Chickadee Drive, Edmonton

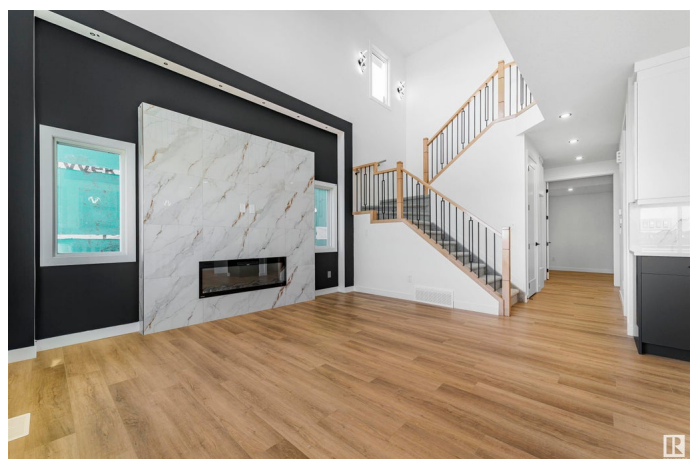
MLS® #E4425203

**\$849,000**

5 Bedroom, 4.00 Bathroom, 2,578 sqft  
Single Family on 0.00 Acres

Starling, Edmonton, AB

Experience the height of elegance in this stunning new fully walkout home in Starling, offering 2,578 sq. ft. of luxurious living space and a triple car garage. The main floor features a soaring open-to-above great room, a formal dining area, a gourmet chef's kitchen, and a handy spice kitchen. You'll also find a mudroom, a versatile bedroom/den/office with a full bathroom—perfect for guests or multi-generational living. Upstairs, unwind in the spacious owner's suite with a 5-piece ensuite & walk-in closet. There are three additional bedrooms, two of which share a Jack-and-Jill bathroom, while the third has access to a separate bathroom. A large bonus room and the convenience of upstairs laundry complete this floor. The walkout basement, with a bathroom rough-in, is a blank canvas for your personal touch. Photos are from the builder's other exceptional homes. Situated near parks and premium amenities, this home offers the perfect balance of comfort and convenience. Don't miss this incredible opportunity!



Built in 2025

### Essential Information

MLS® #	E4425203
Price	\$849,000

Bedrooms	5
Bathrooms	4.00
Full Baths	4
Square Footage	2,578
Acres	0.00
Year Built	2025
Type	Single Family
Sub-Type	Detached Single Family
Style	2 Storey
Status	Active

### **Community Information**

Address	3355 Chickadee Drive
Area	Edmonton
Subdivision	Starling
City	Edmonton
County	ALBERTA
Province	AB
Postal Code	T5S 0K9

### **Amenities**

Amenities	Ceiling 9 ft., Walkout Basement
Parking Spaces	6
Parking	Triple Garage Attached

### **Interior**

Interior Features	ensuite bathroom
Appliances	Garage Control, Garage Opener
Heating	Forced Air-1, Natural Gas
Fireplace	Yes
Fireplaces	Wall Mount
Stories	2
Has Basement	Yes
Basement	Full, Unfinished

### **Exterior**

Exterior	Wood, Vinyl
Exterior Features	Backs Onto Park/Trees, Stream/Pond
Roof	Asphalt Shingles

Construction Wood, Vinyl  
Foundation Concrete Perimeter

### **Additional Information**

Date Listed March 12th, 2025

Days on Market 30

Zoning Zone 59

HOA Fees Freq. Annually

DATA IS DEEMED RELIABLE BUT IS NOT GUARANTEED ACCURATE BY THE REALTORS® ASSOCIATION OF EDMONTON. COPYRIGHT 2025 BY THE REALTORS® ASSOCIATION OF EDMONTON. ALL RIGHTS RESERVED. Trademarks are owned or controlled by the Canadian Real Estate Association (CREA) and identify real estate professionals who are members of CREA (REALTOR®, REALTORS®) and/or the quality of services they provide (MLS®, Multiple Listing Service®)

Listing information last updated on April 11th, 2025 at 9:17pm MDT