

\$389,000 - 2031 Hammond Cl, Edmonton

MLS® #E4425336

\$389,000

3 Bedroom, 2.50 Bathroom, 1,273 sqft
Single Family on 0.00 Acres

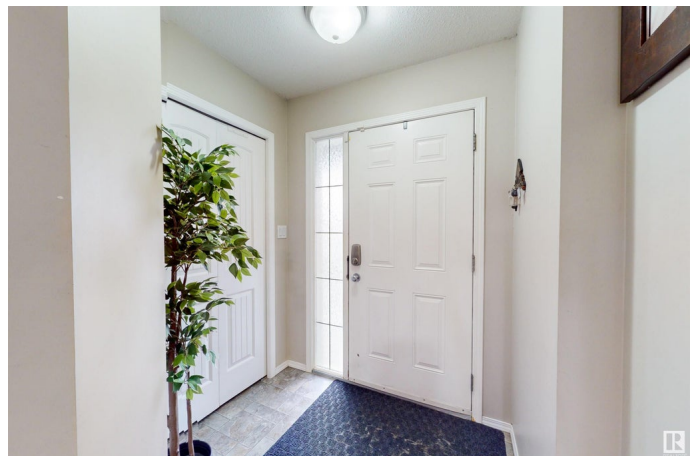
The Hamptons, Edmonton, AB

Welcome to The Hamptons, where this architecturally designed 2-storey half duplex is perfectly crafted for family living. Nestled on an exceptionally large pie-shaped lot with a massive backyard, this home exudes comfort, charm, and bright, airy vibes throughout. The main floor showcases a spacious, light-filled kitchen, a welcoming dining area, and a cozy living room—all thoughtfully designed and tied together with elegant flooring. Upstairs, you'll find three generously sized bedrooms, including a serene primary suite with a walk-in closet and a private 4-piece ensuite, complemented by an additional 4-piece family bathroom. The unfinished basement includes a large laundry area. Step outside to enjoy summer evenings on the deck, surrounded by a beautifully landscaped and fenced yard, offering ample space for relaxation or entertaining. With a single attached garage, extra driveway parking, this home delivers the perfect blend of space, style, and convenience.

Built in 2008

Essential Information

MLS® #	E4425336
Price	\$389,000
Bedrooms	3



Bathrooms	2.50
Full Baths	2
Half Baths	1
Square Footage	1,273
Acres	0.00
Year Built	2008
Type	Single Family
Sub-Type	Half Duplex
Style	2 Storey
Status	Active

Community Information

Address	2031 Hammond Cl
Area	Edmonton
Subdivision	The Hamptons
City	Edmonton
County	ALBERTA
Province	AB
Postal Code	T6M 0K2

Amenities

Amenities	Deck, Detectors Smoke, No Animal Home, No Smoking Home
Parking	Single Garage Attached

Interior

Interior Features	ensuite bathroom
Appliances	Dishwasher-Built-In, Dryer, Microwave Hood Fan, Refrigerator, Stove-Electric, Washer, Window Coverings
Heating	Forced Air-1, Natural Gas
Fireplace	Yes
Fireplaces	Glass Door
Stories	2
Has Basement	Yes
Basement	Full, Unfinished

Exterior

Exterior	Wood, Vinyl
Exterior Features	Fenced, Golf Nearby, Landscaped, Public Transportation, Schools, Shopping Nearby, Treed Lot

Roof	Asphalt Shingles
Construction	Wood, Vinyl
Foundation	Concrete Perimeter

School Information

Elementary	Bessie Nichols School
Middle	Ellerslie Campus School
High	Jasper Place School

Additional Information

Date Listed	March 12th, 2025
Days on Market	2
Zoning	Zone 58

DATA IS DEEMED RELIABLE BUT IS NOT GUARANTEED ACCURATE BY THE REALTORS® ASSOCIATION OF EDMONTON. COPYRIGHT 2025 BY THE REALTORS® ASSOCIATION OF EDMONTON. ALL RIGHTS RESERVED. Trademarks are owned or controlled by the Canadian Real Estate Association (CREA) and identify real estate professionals who are members of CREA (REALTOR®, REALTORS®) and/or the quality of services they provide (MLS®, Multiple Listing Service®)

Listing information last updated on March 14th, 2025 at 6:17am MDT