

Courtesy Of Nicolas Troncoso Of Sweetly

\$425,000 - 10519 76 Avenue, Edmonton

MLS® #E4427342

\$425,000

3 Bedroom, 2.00 Bathroom, 1,709 sqft

Single Family on 0.00 Acres

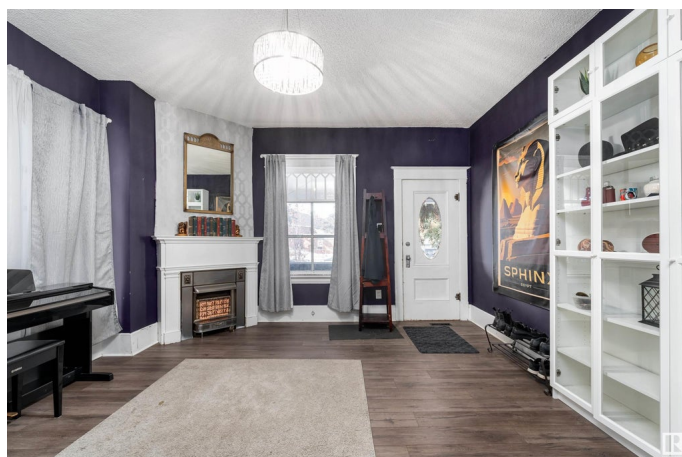
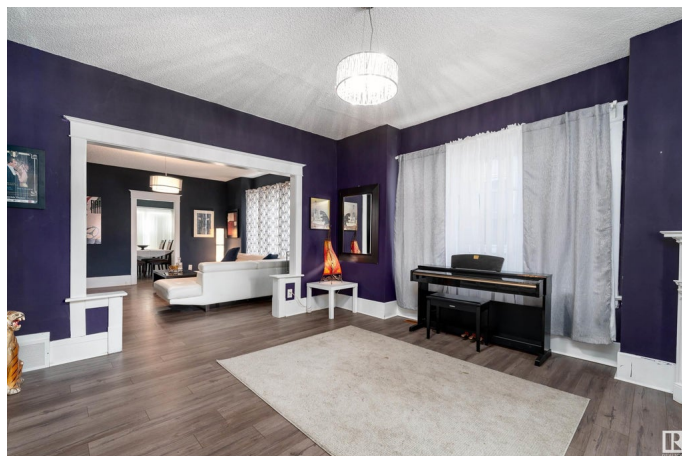
Queen Alexandra, Edmonton, AB

Welcome to this charming 2-storey home in the desirable Queen Alexandra neighborhood. Offering 1,708 sq ft of living space, this residence is ideal for families seeking comfort. The main floor features a huge living area with a bright living room, dining room, and family room, perfect for entertaining. You'll also find a bedroom and 4-pc bathroom, as well as a well-appointed kitchen with ample storage and a laundry room for added convenience. Upstairs, you'll discover 2 spacious bedrooms, a versatile bonus room, and a 4-pc bath, offering plenty of space for growing families. Step outside to the fenced backyard, ideal for outdoor activities, or enjoy your morning coffee on the front porch. A detached double garage provides ample space for parking and storage. Located just minutes from Whyte Ave, Calgary Tr, public transit, schools, and grocery stores, you'll enjoy easy access to everything you need while living in a peaceful neighborhood. Don't miss out on this fantastic opportunity!

Built in 1924

Essential Information

MLS® #	E4427342
Price	\$425,000
Bedrooms	3
Bathrooms	2.00



Full Baths	2
Square Footage	1,709
Acres	0.00
Year Built	1924
Type	Single Family
Sub-Type	Detached Single Family
Style	2 Storey
Status	Active

Community Information

Address	10519 76 Avenue
Area	Edmonton
Subdivision	Queen Alexandra
City	Edmonton
County	ALBERTA
Province	AB
Postal Code	T6E 1L2

Amenities

Amenities	Ceiling 9 ft., Front Porch
Parking	Double Garage Detached

Interior

Appliances	Dryer, Garage Opener, Hood Fan, Humidifier-Power(Furnace), Refrigerator, Stove-Gas, Washer
Heating	Forced Air-1, Natural Gas
Stories	2
Has Basement	Yes
Basement	Full, Unfinished

Exterior

Exterior	Wood, Stucco
Exterior Features	Back Lane, Fenced, Landscaped, Playground Nearby, Public Transportation, Schools, Shopping Nearby
Roof	Asphalt Shingles
Construction	Wood, Stucco
Foundation	Concrete Perimeter

School Information

Elementary	Garneau Elementary School
Middle	Allendale School
High	Strathcona High School

Additional Information

Date Listed	March 25th, 2025
-------------	------------------

Days on Market	24
----------------	----

Zoning	Zone 15
--------	---------

DATA IS DEEMED RELIABLE BUT IS NOT GUARANTEED ACCURATE BY THE REALTORS® ASSOCIATION OF EDMONTON. COPYRIGHT 2025 BY THE REALTORS® ASSOCIATION OF EDMONTON. ALL RIGHTS RESERVED. Trademarks are owned or controlled by the Canadian Real Estate Association (CREA) and identify real estate professionals who are members of CREA (REALTOR®, REALTORS®) and/or the quality of services they provide (MLS®, Multiple Listing Service®)

Listing information last updated on April 18th, 2025 at 2:17pm MDT