

\$588,800 - 1531 Malone Close, Edmonton

MLS® #E4428182

\$588,800

3 Bedroom, 2.50 Bathroom, 1,893 sqft

Single Family on 0.00 Acres

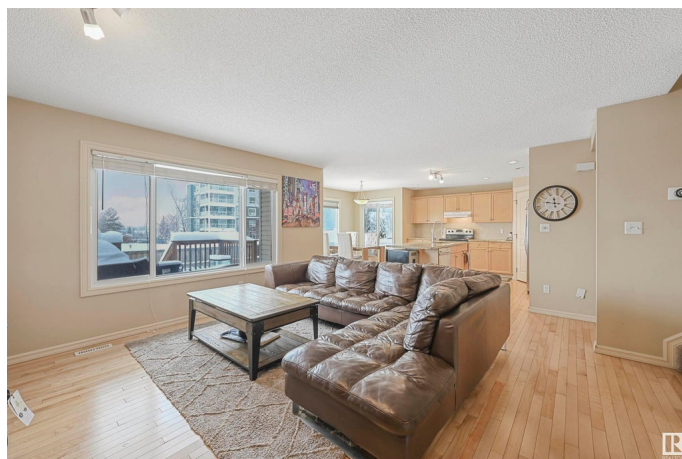
Magrath Heights, Edmonton, AB

Welcome to desirable Magrath Manors and this lovely Landmark Built 1,893sf 2-Storey home situated on a large pie shaped yard. This open concept main floor featuring a spacious great room with a gas F/P. The kitchen has ample counter space, SS appliances, granite countertops, large kitchen nook, 2 pc bath, laundry & maple hardwood floors. The upper level features include a large vaulted bonus room, 3 total bedrooms, 4-pce bath & plenty of storage. The primary bedroom features a large walk-in closet, 4pc ensuite w/ corner soaker tub & oversized separate shower. Other features include over-sized double attached garage (21.5' wide) & is roughed in for central vac. You're located steps to the Magrath Park, shopping, restaurants, city transit, the Anthony Henday & Whitemud Drive. Don't miss out on this beautiful home in one of Edmonton's most desirable neighbourhoods!

Built in 2007

Essential Information

| | |
|------------|-----------|
| MLS® # | E4428182 |
| Price | \$588,800 |
| Bedrooms | 3 |
| Bathrooms | 2.50 |
| Full Baths | 2 |



| | |
|----------------|----------------------|
| Half Baths | 1 |
| Square Footage | 1,893 |
| Acres | 0.00 |
| Year Built | 2007 |
| Type | Single Family |
| Sub-Type | Residential Attached |
| Style | 2 Storey |
| Status | Active |

Community Information

| | |
|-------------|-------------------|
| Address | 1531 Malone Close |
| Area | Edmonton |
| Subdivision | Magrath Heights |
| City | Edmonton |
| County | ALBERTA |
| Province | AB |
| Postal Code | T6R 0H3 |

Amenities

| | |
|-----------|------------------------|
| Amenities | Ceiling 9 ft., Deck |
| Parking | Double Garage Attached |

Interior

| | |
|-------------------|---|
| Interior Features | ensuite bathroom |
| Appliances | Dishwasher-Built-In, Dryer, Hood Fan, Oven-Microwave, Refrigerator, Stove-Electric, Washer, Window Coverings, See Remarks |
| Heating | Forced Air-1, Natural Gas |
| Fireplace | Yes |
| Fireplaces | Mantel |
| Stories | 2 |
| Has Basement | Yes |
| Basement | Full, Unfinished |

Exterior

| | |
|-------------------|--|
| Exterior | Wood, Stone, Vinyl |
| Exterior Features | Airport Nearby, Cul-De-Sac, Fenced, Playground Nearby, Public Transportation, Schools, Shopping Nearby |
| Roof | Asphalt Shingles |
| Construction | Wood, Stone, Vinyl |

Foundation Concrete Perimeter

School Information

Elementary Nellie Carlson/Archbishop
Middle Nellie Carlson/Archbishop
High Lillian Osborne/MMM

Additional Information

Date Listed March 29th, 2025
Days on Market 21
Zoning Zone 14
HOA Fees 382.5
HOA Fees Freq. Annually

DATA IS DEEMED RELIABLE BUT IS NOT GUARANTEED ACCURATE BY THE REALTORS® ASSOCIATION OF EDMONTON. COPYRIGHT 2025 BY THE REALTORS® ASSOCIATION OF EDMONTON. ALL RIGHTS RESERVED.Trademarks are owned or controlled by the Canadian Real Estate Association (CREA) and identify real estate professionals who are members of CREA (REALTOR®, REALTORS®) and/or the quality of services they provide (MLS®, Multiple Listing Service®)
Listing information last updated on April 19th, 2025 at 7:17am MDT