

Courtesy Of Taminder S Sahota Of MaxWell Polaris

\$150,000 - 103 12035 22 Avenue, Edmonton

MLS® #E4429099

\$150,000

1 Bedroom, 1.00 Bathroom, 634 sqft
Condo / Townhouse on 0.00 Acres

Heritage Valley Town Centre Area, Edmonton,
AB

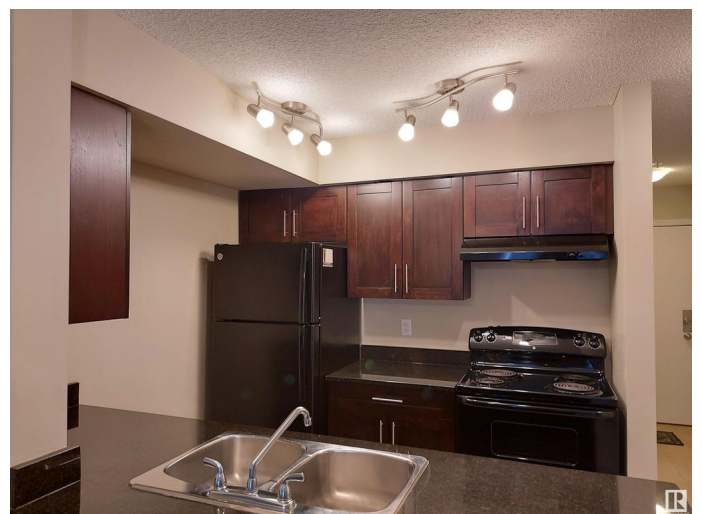
THIS INNOVATION MODEL OF CARLISLE GROUP ON THE MAIN FLOOR OF THE BUILDING IS WAITING FOR YOU. THIS COSY UNIT HAS ONE BEDROOM, A DEN/BEDROOM, UPGRADED KITCHEN, FULL BATH, LIVING ROOM & IN SUITE LAUNDRY APPARTMENT AND IS PERFECT FOR FIRST TIME HOME BUYERS OR INVESTORS. CLOSE TO AIRPORT, PUBLIC TRANSPORT & COMMERCIAL (REAL CANADIAN SUPERSTORE).

Built in 2014

Essential Information

MLS® #	E4429099
Price	\$150,000
Bedrooms	1
Bathrooms	1.00
Full Baths	1
Square Footage	634
Acres	0.00
Year Built	2014
Type	Condo / Townhouse
Sub-Type	Lowrise Apartment
Style	Single Level Apartment
Status	Active

Community Information



Address	103 12035 22 Avenue
Area	Edmonton
Subdivision	Heritage Valley Town Centre Area
City	Edmonton
County	ALBERTA
Province	AB
Postal Code	T6W 2X9

Amenities

Amenities	Detectors Smoke, Parking-Visitor
Parking	Stall

Interior

Appliances	Dishwasher-Built-In, Hood Fan, Refrigerator, Stacked Washer/Dryer, Stove-Electric, Window Coverings
Heating	Baseboard, See Remarks
# of Stories	4
Stories	4
Has Basement	Yes
Basement	None, No Basement

Exterior

Exterior	Wood, Stone, Vinyl
Exterior Features	Airport Nearby, Commercial, Playground Nearby, Public Transportation, Shopping Nearby
Roof	Asphalt Shingles
Construction	Wood, Stone, Vinyl
Foundation	Concrete Perimeter

Additional Information

Date Listed	April 4th, 2025
Days on Market	3
Zoning	Zone 55
Condo Fee	\$384

DATA IS DEEMED RELIABLE BUT IS NOT GUARANTEED ACCURATE BY THE REALTORS® ASSOCIATION OF EDMONTON. COPYRIGHT 2025 BY THE REALTORS® ASSOCIATION OF EDMONTON. ALL RIGHTS RESERVED. Trademarks are owned or controlled by the Canadian Real Estate Association (CREA) and identify real estate professionals who are members of CREA (REALTOR®, REALTORS®) and/or the quality of services they provide (MLS®, Multiple Listing Service®)

Listing information last updated on April 7th, 2025 at 1:32pm MDT