

\$234,900 - 657 Millbourne Road, Edmonton

MLS® #E4430043

\$234,900

3 Bedroom, 1.50 Bathroom, 1,135 sqft
Condo / Townhouse on 0.00 Acres

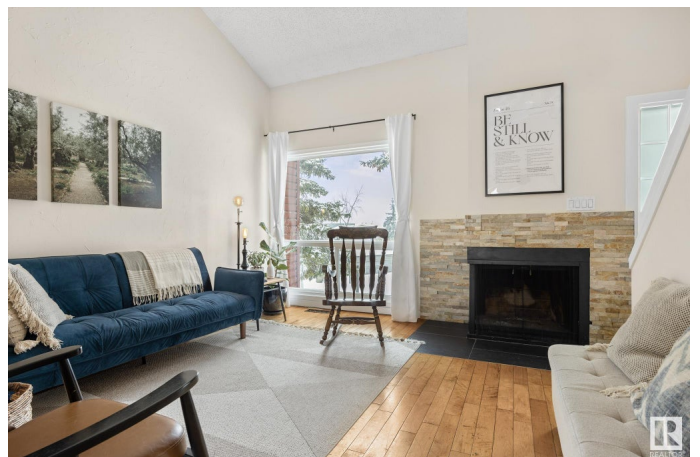
Lee Ridge, Edmonton, AB

Welcome to Lee Ridge Village - your next family home awaits! This bright and well-kept 3-bedroom end-unit townhouse is perfect for first-time buyers or investors. As you enter, you're welcomed by soaring ceilings that create an open, airy atmosphere. Beautiful hardwood floors flow through the spacious living and dining area, gleaming with natural sunlight. The renovated kitchen is bright and well-appointed, offering plenty of space for cooking and everyday use. The main floor also features a convenient 2-piece powder room. Upstairs you'll find a full 4-piece bathroom, linen closet, and 3 spacious bedrooms. The nearly finished basement includes a large family room, massive storage space, and a laundry/mechanical area. Step outside to your private backyard retreat with a covered deck and fenced yard. This home is located close to schools, shopping, and public transit, making it a fantastic place to live or invest in. With space, updates, and a great location, this home has it all. Don't miss your chance!

Built in 1979

Essential Information

MLS® #	E4430043
Price	\$234,900
Bedrooms	3



Bathrooms	1.50
Full Baths	1
Half Baths	1
Square Footage	1,135
Acres	0.00
Year Built	1979
Type	Condo / Townhouse
Sub-Type	Townhouse
Style	2 Storey
Status	Active

Community Information

Address	657 Millbourne Road
Area	Edmonton
Subdivision	Lee Ridge
City	Edmonton
County	ALBERTA
Province	AB
Postal Code	T6K 3N3

Amenities

Amenities	On Street Parking, Deck, Parking-Visitor, Vaulted Ceiling, Vinyl Windows
Parking	Stall

Interior

Appliances	Dishwasher-Built-In, Dryer, Hood Fan, Refrigerator, Stove-Electric, Washer
Heating	Forced Air-1, Natural Gas
Fireplace	Yes
Fireplaces	Tile Surround
Stories	3
Has Basement	Yes
Basement	Full, Partially Finished

Exterior

Exterior	Wood, Vinyl
Exterior Features	Fenced, Flat Site, Golf Nearby, Low Maintenance Landscape, Playground Nearby, Public Swimming Pool, Public Transportation, Shopping Nearby

Roof	Asphalt Shingles
Construction	Wood, Vinyl
Foundation	Concrete Perimeter

Additional Information

Date Listed	April 10th, 2025
Days on Market	3
Zoning	Zone 29
Condo Fee	\$370

DATA IS DEEMED RELIABLE BUT IS NOT GUARANTEED ACCURATE BY THE REALTORS® ASSOCIATION OF EDMONTON. COPYRIGHT 2025 BY THE REALTORS® ASSOCIATION OF EDMONTON. ALL RIGHTS RESERVED. Trademarks are owned or controlled by the Canadian Real Estate Association (CREA) and identify real estate professionals who are members of CREA (REALTOR®, REALTORS®) and/or the quality of services they provide (MLS®, Multiple Listing Service®)

Listing information last updated on April 13th, 2025 at 8:47am MDT